

Acta Crystallographica Section E

Structure Reports

Online

ISSN 1600-5368

Acetatoaqua[4,4',6,6'-tetra-*tert*-butyl-2,2'-[(2-pyridylmethyl)iminodimethyl-ene]diphenolato}manganese(III) ethanol solvate

 Elliott Chard,^a Louise N. Dawe^b and Christopher M. Kozak^{a*}

^aDepartment of Chemistry, Memorial University of Newfoundland, St John's, NL, Canada A1B 3X7, and ^bC-CART X-Ray Diffraction Laboratory, Department of Chemistry, Memorial University of Newfoundland, St John's, NL, Canada A1B 3X7
Correspondence e-mail: ckozak@mun.ca

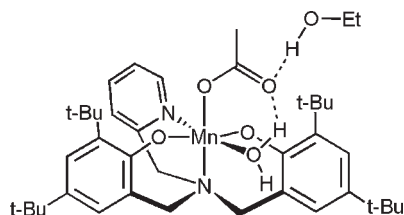
Received 19 May 2010; accepted 3 June 2010

Key indicators: single-crystal X-ray study; $T = 153$ K; mean $\sigma(\text{C}-\text{C}) = 0.004$ Å; R factor = 0.050; wR factor = 0.138; data-to-parameter ratio = 19.3.

In the title complex, $[\text{Mn}(\text{C}_{36}\text{H}_{50}\text{N}_2\text{O}_2)(\text{CH}_3\text{COO})(\text{H}_2\text{O})]\cdot\text{CH}_3\text{CH}_2\text{OH}$, the Mn^{III} atom is in an octahedral environment and is coordinated by the tetradentate amine-bis(phenolate) ligand, a monodentate acetate anion and a water molecule. An ethanol solvent molecule is also found in the asymmetric unit. The structure displays $\text{O}-\text{H}\cdots\text{O}$ and $\text{C}-\text{H}\cdots\text{O}$ hydrogen bonding.

Related literature

For a related structure, see: van Gorkum *et al.* (2008). For the structure of the unmetallated ligand, see: Chmura *et al.* (2006). For synthetic procedures, see: Kerton *et al.* (2008); Shimazaki *et al.* (2000).



Experimental

Crystal data

 $[\text{Mn}(\text{C}_{36}\text{H}_{50}\text{N}_2\text{O}_2)(\text{C}_2\text{H}_3\text{O}_2)\cdot(\text{H}_2\text{O})]\cdot\text{C}_2\text{H}_6\text{O}$
 $M_r = 720.87$

 Monoclinic, $P2_1/c$
 $a = 16.505$ (3) Å

 $b = 10.8310$ (16) Å

 $c = 26.512$ (5) Å

 $\beta = 118.798$ (3)°

 $V = 4153.2$ (12) Å³
 $Z = 4$

 Mo $K\alpha$ radiation

 $\mu = 0.36$ mm⁻¹
 $T = 153$ K

 $0.40 \times 0.30 \times 0.24$ mm

Data collection

Rigaku Saturn diffractometer
Absorption correction: numerical
(*ABSCOR*; Higashi, 2000)
 $T_{\text{min}} = 0.906$, $T_{\text{max}} = 0.948$

44205 measured reflections
8589 independent reflections
8248 reflections with $I > 2\sigma(I)$
 $R_{\text{int}} = 0.032$

Refinement

 $R[F^2 > 2\sigma(F^2)] = 0.050$
 $wR(F^2) = 0.138$
 $S = 1.10$

8589 reflections

444 parameters

H-atom parameters constrained

 $\Delta\rho_{\text{max}} = 0.59$ e Å⁻³
 $\Delta\rho_{\text{min}} = -0.50$ e Å⁻³
Table 1

Hydrogen-bond geometry (Å, °).

$D-\text{H}\cdots A$	$D-\text{H}$	$\text{H}\cdots A$	$D\cdots A$	$D-\text{H}\cdots A$
$\text{O5}-\text{H41A}\cdots\text{O6}^{\text{i}}$	0.92	1.91	2.799 (2)	160
$\text{O6}-\text{H42}\cdots\text{O4}^{\text{ii}}$	0.91	1.81	2.723 (3)	171
$\text{O5}-\text{H41B}\cdots\text{O4}$	0.93	1.79	2.677 (2)	160
$\text{C4}-\text{H4B}\cdots\text{O1}$	0.98	2.36	2.991 (4)	122
$\text{C5}-\text{H5C}\cdots\text{O1}$	0.98	2.28	2.929 (3)	123
$\text{C15}-\text{H15B}\cdots\text{O5}$	0.99	2.54	3.202 (3)	124
$\text{C34}-\text{H34C}\cdots\text{O2}$	0.98	2.45	3.102 (3)	123
$\text{C35}-\text{H35A}\cdots\text{O2}$	0.98	2.32	3.010 (3)	126

 Symmetry codes: (i) $-x + 1, y - \frac{1}{2}, -z + \frac{3}{2}$; (ii) $x, y + 1, z$.

Data collection: *CrystalClear* (Rigaku, 2005); cell refinement: *CrystalClear*; data reduction: *CrystalClear*; program(s) used to solve structure: *SIR92* (Altomare *et al.*, 1994); program(s) used to refine structure: *SHELXL97* (Sheldrick, 2008); molecular graphics: *CrystalStructure* (Rigaku/MSK, 2005); software used to prepare material for publication: *CrystalStructure*.

This work was supported by Memorial University of Newfoundland, the Natural Sciences and Engineering Research Council (NSERC) of Canada, the Canada Foundation for Innovation and the Provincial Government of Newfoundland and Labrador.

Supplementary data and figures for this paper are available from the IUCr electronic archives (Reference: PV2284).

References

- Altomare, A., Cascarano, G., Giacovazzo, C., Guagliardi, A., Burla, M. C., Polidori, G. & Camalli, M. (1994). *J. Appl. Cryst.* **27**, 435.
- Chmura, A. J., Davidson, M. G., Jones, M. D., Lunn, M. D., Mahon, M. F., Johnson, A. F., Khunkamchoo, P., Roberts, S. L. & Wong, S. S. F. (2006). *Macromolecules*, **39**, 7250–7257.
- Gorkum, R. van, Berding, J., Mills, A. M., Kooijman, H., Tooke, D. M., Spek, A. L., Mutikainen, I., Turpeinen, U., Reedijk, J. & Bouwman, E. (2008). *Eur. J. Inorg. Chem.* pp. 1487–1496.
- Higashi, T. (2000). *ABSCOR*. Rigaku Corporation, Tokyo, Japan.
- Kerton, F. M., Holloway, S., Power, A., Soper, R. G., Sheridan, K., Lynam, J. M., Whitwood, A. C. & Willans, C. E. (2008). *Can. J. Chem.* **86**, 435–443.
- Rigaku (2005). *CrystalClear*. Rigaku Corporation, Tokyo, Japan.
- Rigaku/MSK (2005). *CrystalStructure*. Rigaku/MSK, The Woodlands, Texas, USA.
- Sheldrick, G. M. (2008). *Acta Cryst.* **A64**, 112–122.
- Shimazaki, Y., Huth, S., Odani, A. & Yamauchi, O. (2000). *Angew. Chem. Int. Ed.* **39**, 1666–1669.

supplementary materials

Acta Cryst. (2010). E66, m771 [doi:10.1107/S1600536810021288]

Acetatoqua{4,4',6,6'-tetra-*tert*-butyl-2,2'-[(2-pyridylmethyl)iminodimethylene]diphenolato}manganese(III) ethanol solvate

E. Chard, L. N. Dawe and C. M. Kozak

Comment

In the complex acetato[2-pyridylamino-*N,N*-bis(2-methylene-4,6-*tert*-butylphenolato)]aquamanganese(III) (**1**), the manganese(III) ion resides in a distorted octahedral geometry. Its coordination sphere is occupied by two phenolate oxygen atoms, a tertiary amine and a pyridine nitrogen donor. The phenolate oxygens, O1 and O2, of the tetradentate ligand are *trans* orientated and exhibit Mn1—O1 and Mn1—O2 bond lengths of 1.8532 (14) and 1.8770 (14) Å, respectively. The O3 atom of the monodentate acetate group is *trans* to the amine nitrogen, N1, and the Mn1—O3 and Mn1—N1 bond distances are 1.9958 (15) and 2.1058 (16) Å, respectively. The water ligand, O5, is *trans* to the pyridine nitrogen donor, N2. The Mn ion is Jahn-Teller distorted along the Mn1—N2 and Mn1—O5 bonds, which are considerably elongated giving bond distances of 2.2543 (17) and 2.2434 (15) Å, respectively. This elongated axis is similar to that reported by Van Gorkum *et al.* (2008), except that the previously reported structure possesses a bidentate acetate and no water ligand. Bond angles of *trans*-orientated ligands around Mn are slightly bent and range between 170.77 (6)° for O3—Mn1—N1 and 177.70 (6)° for O1—Mn1—O2.

The complex exhibits both intra- and intermolecular hydrogen bonding. The water ligand acts as a hydrogen bond donor to the uncoordinated O4 of the acetate ligand. The O4...O5 interatomic distance is 2.677 (2) Å and within the typical range for hydrogen bonding between oxygen-containing hydrogen bond donor-acceptors. The uncoordinated O4 of the acetate group also displays intermolecular hydrogen bonding to an ethanol solvate molecule. The interatomic distance between O4 of the acetate and O6 [x, y-1, z] of the ethanol molecule is 2.723 (2) Å, which is within the sum of the van der Waals radii. The ethanol ligand is the hydrogen bond donor and the acetate O6 is the acceptor. Another intermolecular hydrogen bond exists between the coordinated water ligand and the ethanol oxygen atom of a second ethanol molecule (2.7989 (18) Å for O5...O6 [-x+1, y-1/2, -z+3/2]). In this interaction, the water ligand acts as hydrogen bond donor and the solvate ethanol O-atom is the acceptor. These multiple intermolecular hydrogen bonding interactions effectively result in chains where the six-coordinate Mn complexes are bridged by solvate ethanol molecules.

Experimental

The 2-pyridylamino-*N,N*-bis(2-methylene-4,6-*tert*-butylphenol) ligand (abbreviated H₂(O₂NN')) was prepared according to the published methods (Kerton *et al.*, 2008; Shimazaki *et al.*, 2000). Mn(OAc)₂·4H₂O (0.5033 g, 2.0 mmol) and H₂(O₂NN') (0.5619 g, 1.00 mmol) were dissolved in 95% ethanol (20 ml) and heated to reflux for one hour. The resulting dark purple solution was filtered through a glass frit while hot. Distilled H₂O (10 ml) was added to the dark purple filtrate. As the solution cooled to room temperature, dark purple crystals suitable for X-ray diffraction precipitated out of the ethanol/water medium (580 mg, 86% yield). MS (MALDI-TOF) m/z, intensity (ion): 656.3305, 20% ([M—H₂O]⁺); 596.3156, 42% ([M—H₂O-OAc]⁺).

Refinement

H(41 A, 41B) and H(42) were located in difference map positions, and refined on a riding model. All other hydrogen atoms were introduced in calculated positions with distances C—H = 0.95, 0.98 and 0.99 Å for aryl, methyl and methylene type H-atoms and refined on a riding model. Isotropic thermal parameters 1.2 times that of their bonding partners were allowed for all H-atoms.

Figures

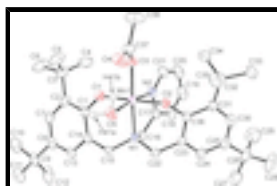


Fig. 1. Molecular structure of **1** with atom numbering scheme. Ellipsoids drawn at the 50% probability level. Only the H-atoms on the water ligand (H 41a and H41b) are shown. Ethanol solvate molecule removed for clarity.

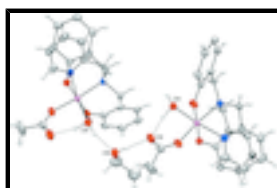


Fig. 2. Molecular structure of **1** showing intermolecular hydrogen-bonded linear chain. Ellipsoids drawn at the 50% probability level and *t*-butyl groups on phenolate rings removed for clarity.

Acetatoaqua{4,4',6,6'-tetra-*tert*-butyl-2,2'-[(2- pyridylmethyl)iminodimethylene]diphenolato}manganese(III) ethanol solvate

Crystal data

[Mn(C₃₆H₅₀N₂O₂)(C₂H₃O₂)(H₂O)]·C₂H₆O

M_r = 720.87

Monoclinic, *P*2₁/*c*

Hall symbol: -*P* 2ybc

a = 16.505 (3) Å

b = 10.8310 (16) Å

c = 26.512 (5) Å

β = 118.798 (3)°

V = 4153.2 (12) Å³

Z = 4

F(000) = 1552

D_x = 1.153 Mg m⁻³

Mo *K*α radiation, λ = 0.71075 Å

Cell parameters from 15117 reflections

θ = 2.0–30.7°

μ = 0.36 mm⁻¹

T = 153 K

Irregular, purple

0.40 × 0.30 × 0.24 mm

Data collection

Rigaku Saturn
diffractometer

Radiation source: fine-focus sealed tube
graphite - Rigaku SHINE

Detector resolution: 14.63 pixels mm⁻¹

ω scans

Absorption correction: numerical

8589 independent reflections

8248 reflections with *I* > 2σ(*I*)

*R*_{int} = 0.032

θ_{max} = 26.5°, θ_{min} = 2.7°

h = -20→20

k = -13→13

(ABSCOR; Higashi, 2000)

$T_{\min} = 0.906$, $T_{\max} = 0.948$

$l = -33 \rightarrow 33$

44205 measured reflections

Refinement

Refinement on F^2

Primary atom site location: structure-invariant direct methods

Least-squares matrix: full

Secondary atom site location: difference Fourier map

$R[F^2 > 2\sigma(F^2)] = 0.050$

Hydrogen site location: inferred from neighbouring sites

$wR(F^2) = 0.138$

H-atom parameters constrained

$S = 1.10$

$w = 1/[\sigma^2(F_o^2) + (0.069P)^2 + 2.8924P]$

where $P = (F_o^2 + 2F_c^2)/3$

8589 reflections

$(\Delta/\sigma)_{\max} = 0.001$

444 parameters

$\Delta\rho_{\max} = 0.59 \text{ e } \text{\AA}^{-3}$

0 restraints

$\Delta\rho_{\min} = -0.50 \text{ e } \text{\AA}^{-3}$

Special details

Geometry. All esds (except the esd in the dihedral angle between two l.s. planes) are estimated using the full covariance matrix. The cell esds are taken into account individually in the estimation of esds in distances, angles and torsion angles; correlations between esds in cell parameters are only used when they are defined by crystal symmetry. An approximate (isotropic) treatment of cell esds is used for estimating esds involving l.s. planes.

Refinement. Refinement of F^2 against ALL reflections. The weighted R -factor wR and goodness of fit S are based on F^2 , conventional R -factors R are based on F , with F set to zero for negative F^2 . The threshold expression of $F^2 > \sigma(F^2)$ is used only for calculating R -factors(gt) etc. and is not relevant to the choice of reflections for refinement. R -factors based on F^2 are statistically about twice as large as those based on F , and R -factors based on ALL data will be even larger.

Fractional atomic coordinates and isotropic or equivalent isotropic displacement parameters (\AA^2)

	x	y	z	$U_{\text{iso}}^*/U_{\text{eq}}$
Mn1	0.569186 (18)	0.22108 (3)	0.887302 (11)	0.02241 (10)
O1	0.44186 (9)	0.23550 (13)	0.85424 (7)	0.0321 (3)
O2	0.69749 (9)	0.20020 (12)	0.91944 (6)	0.0268 (3)
O3	0.55745 (10)	0.04484 (13)	0.90481 (6)	0.0328 (3)
O4	0.57756 (14)	-0.05365 (15)	0.83781 (8)	0.0495 (4)
O5	0.55651 (10)	0.18014 (14)	0.80084 (6)	0.0334 (3)
H41A	0.4974	0.1796	0.7701	0.041*
H41B	0.5646	0.0956	0.8061	0.041*
O6	0.60773 (12)	0.72486 (15)	0.80117 (7)	0.0424 (4)
H42	0.6016	0.8027	0.8123	0.051*
N1	0.57820 (10)	0.41364 (14)	0.88018 (6)	0.0243 (3)
N2	0.58705 (12)	0.28484 (16)	0.97301 (7)	0.0288 (4)
C1	0.38156 (13)	0.32682 (18)	0.82789 (8)	0.0271 (4)
C2	0.28873 (14)	0.31164 (19)	0.81628 (9)	0.0325 (4)
C3	0.25997 (16)	0.1931 (2)	0.83644 (12)	0.0440 (6)

supplementary materials

C4	0.3141 (2)	0.1835 (3)	0.90203 (13)	0.0579 (7)
H4A	0.3029	0.2574	0.9191	0.070*
H4B	0.3802	0.1767	0.9145	0.070*
H4C	0.2937	0.1102	0.9146	0.070*
C5	0.2776 (2)	0.0777 (2)	0.80967 (15)	0.0582 (7)
H5A	0.2429	0.0839	0.7676	0.070*
H5B	0.2574	0.0042	0.8222	0.070*
H5C	0.3438	0.0711	0.8221	0.070*
C6	0.15607 (19)	0.1929 (3)	0.81807 (17)	0.0650 (9)
H6A	0.1413	0.2656	0.8341	0.078*
H6B	0.1409	0.1179	0.8325	0.078*
H6C	0.1200	0.1949	0.7760	0.078*
C7	0.22611 (14)	0.4063 (2)	0.78625 (9)	0.0342 (4)
H7	0.1636	0.3966	0.7778	0.041*
C8	0.25052 (14)	0.5142 (2)	0.76797 (8)	0.0327 (4)
C9	0.18036 (15)	0.6155 (2)	0.73282 (9)	0.0392 (5)
C10	0.08308 (18)	0.5871 (3)	0.72413 (12)	0.0579 (7)
H10A	0.0626	0.5065	0.7054	0.070*
H10B	0.0399	0.6511	0.6999	0.070*
H10C	0.0848	0.5856	0.7616	0.070*
C11	0.17281 (18)	0.6194 (3)	0.67266 (11)	0.0511 (6)
H11A	0.1527	0.5385	0.6542	0.061*
H11B	0.2333	0.6397	0.6763	0.061*
H11C	0.1276	0.6823	0.6492	0.061*
C12	0.2115 (2)	0.7395 (3)	0.76157 (14)	0.0730 (11)
H12A	0.2734	0.7578	0.7672	0.088*
H12B	0.2130	0.7380	0.7990	0.088*
H12C	0.1682	0.8034	0.7372	0.088*
C13	0.34281 (14)	0.52737 (19)	0.78144 (8)	0.0299 (4)
H13	0.3617	0.6006	0.7703	0.036*
C14	0.40805 (13)	0.43584 (18)	0.81089 (8)	0.0264 (4)
C15	0.50525 (12)	0.45405 (18)	0.82128 (8)	0.0269 (4)
H15A	0.5145	0.5426	0.8162	0.032*
H15B	0.5132	0.4071	0.7919	0.032*
C16	0.56725 (14)	0.48099 (18)	0.92526 (8)	0.0294 (4)
H16A	0.5015	0.5040	0.9098	0.035*
H16B	0.6038	0.5582	0.9348	0.035*
C17	0.59771 (13)	0.40683 (19)	0.97957 (8)	0.0295 (4)
C18	0.62907 (16)	0.4634 (2)	1.03279 (9)	0.0414 (5)
H18	0.6371	0.5504	1.0367	0.050*
C19	0.64830 (17)	0.3901 (3)	1.08012 (10)	0.0478 (6)
H19	0.6702	0.4262	1.1171	0.057*
C20	0.63538 (17)	0.2641 (3)	1.07310 (10)	0.0449 (6)
H20	0.6471	0.2125	1.1049	0.054*
C21	0.60499 (16)	0.2145 (2)	1.01892 (9)	0.0367 (5)
H21	0.5965	0.1277	1.0140	0.044*
C22	0.67118 (13)	0.44181 (19)	0.88544 (9)	0.0308 (4)
H22A	0.6774	0.3970	0.8549	0.037*
H22B	0.6751	0.5313	0.8794	0.037*

C23	0.74940 (13)	0.40598 (19)	0.94303 (8)	0.0289 (4)
C24	0.80855 (14)	0.4939 (2)	0.98171 (9)	0.0339 (4)
H24	0.7978	0.5791	0.9723	0.041*
C25	0.88294 (14)	0.4583 (2)	1.03370 (9)	0.0345 (4)
C26	0.94866 (16)	0.5507 (2)	1.07875 (11)	0.0437 (5)
C27	0.9188 (2)	0.6838 (3)	1.06142 (15)	0.0642 (8)
H27A	0.8558	0.6952	1.0554	0.077*
H27B	0.9201	0.7025	1.0257	0.077*
H27C	0.9610	0.7393	1.0920	0.077*
C28	1.04710 (18)	0.5335 (3)	1.08810 (15)	0.0664 (9)
H28A	1.0666	0.4478	1.0992	0.080*
H28B	1.0892	0.5891	1.1187	0.080*
H28C	1.0484	0.5527	1.0524	0.080*
C29	0.9485 (2)	0.5255 (3)	1.13607 (13)	0.0650 (8)
H29A	0.9677	0.4401	1.1481	0.078*
H29B	0.8861	0.5384	1.1308	0.078*
H29C	0.9916	0.5821	1.1657	0.078*
C30	0.89708 (13)	0.3316 (2)	1.04407 (9)	0.0328 (4)
H30	0.9497	0.3061	1.0786	0.039*
C31	0.83970 (13)	0.24007 (19)	1.00753 (8)	0.0283 (4)
C32	0.86199 (14)	0.1024 (2)	1.02091 (9)	0.0322 (4)
C33	0.95429 (16)	0.0820 (2)	1.07562 (10)	0.0445 (5)
H33A	0.9521	0.1204	1.1084	0.053*
H33B	1.0043	0.1193	1.0708	0.053*
H33C	0.9656	-0.0068	1.0826	0.053*
C34	0.78670 (16)	0.0385 (2)	1.02959 (11)	0.0430 (5)
H34A	0.7825	0.0778	1.0615	0.052*
H34B	0.8024	-0.0490	1.0384	0.052*
H34C	0.7272	0.0457	0.9943	0.052*
C35	0.86841 (16)	0.0416 (2)	0.97090 (10)	0.0406 (5)
H35A	0.8100	0.0534	0.9352	0.049*
H35B	0.8803	-0.0470	0.9785	0.049*
H35C	0.9190	0.0793	0.9669	0.049*
C36	0.76088 (13)	0.27986 (18)	0.95627 (8)	0.0259 (4)
C37	0.56916 (15)	-0.0520 (2)	0.88233 (10)	0.0367 (5)
C38	0.5741 (3)	-0.1711 (2)	0.91295 (15)	0.0637 (8)
H38A	0.5273	-0.2285	0.8861	0.076*
H38B	0.5628	-0.1547	0.9454	0.076*
H38C	0.6356	-0.2077	0.9273	0.076*
C39	0.6996 (2)	0.7183 (3)	0.81098 (13)	0.0624 (8)
H39A	0.7033	0.7619	0.7793	0.075*
H39B	0.7155	0.6307	0.8097	0.075*
C40	0.7703 (3)	0.7727 (4)	0.86721 (17)	0.0810 (11)
H40A	0.8319	0.7648	0.8707	0.097*
H40B	0.7687	0.7287	0.8990	0.097*
H40C	0.7563	0.8602	0.8686	0.097*

supplementary materials

Atomic displacement parameters (\AA^2)

	U^{11}	U^{22}	U^{33}	U^{12}	U^{13}	U^{23}
Mn1	0.02138 (16)	0.01881 (16)	0.02466 (16)	0.00141 (10)	0.00919 (12)	0.00055 (10)
O1	0.0238 (7)	0.0230 (7)	0.0456 (8)	0.0015 (5)	0.0137 (6)	0.0040 (6)
O2	0.0223 (6)	0.0251 (7)	0.0287 (7)	0.0014 (5)	0.0087 (5)	-0.0004 (5)
O3	0.0329 (7)	0.0229 (7)	0.0430 (8)	0.0018 (6)	0.0186 (6)	0.0032 (6)
O4	0.0725 (12)	0.0277 (8)	0.0485 (9)	0.0103 (8)	0.0294 (9)	0.0003 (7)
O5	0.0375 (8)	0.0311 (8)	0.0272 (7)	0.0049 (6)	0.0122 (6)	-0.0005 (6)
O6	0.0423 (9)	0.0312 (8)	0.0453 (9)	-0.0011 (7)	0.0145 (7)	-0.0087 (7)
N1	0.0218 (7)	0.0212 (8)	0.0254 (7)	0.0026 (6)	0.0079 (6)	0.0025 (6)
N2	0.0298 (8)	0.0310 (9)	0.0271 (8)	0.0025 (7)	0.0148 (7)	0.0013 (6)
C1	0.0238 (9)	0.0236 (9)	0.0285 (9)	0.0016 (7)	0.0084 (7)	-0.0038 (7)
C2	0.0254 (9)	0.0281 (10)	0.0402 (11)	-0.0011 (8)	0.0128 (8)	-0.0081 (8)
C3	0.0305 (11)	0.0302 (11)	0.0725 (16)	-0.0047 (9)	0.0257 (11)	-0.0028 (11)
C4	0.0577 (16)	0.0526 (16)	0.0736 (19)	-0.0074 (13)	0.0397 (15)	0.0136 (14)
C5	0.0496 (15)	0.0335 (13)	0.093 (2)	-0.0084 (11)	0.0355 (15)	-0.0092 (13)
C6	0.0382 (14)	0.0462 (15)	0.116 (3)	-0.0040 (12)	0.0415 (16)	0.0043 (16)
C7	0.0236 (9)	0.0340 (11)	0.0388 (11)	0.0027 (8)	0.0099 (8)	-0.0072 (9)
C8	0.0282 (9)	0.0357 (11)	0.0250 (9)	0.0094 (8)	0.0056 (8)	-0.0043 (8)
C9	0.0305 (10)	0.0400 (12)	0.0339 (10)	0.0135 (9)	0.0049 (8)	0.0011 (9)
C10	0.0385 (13)	0.073 (2)	0.0539 (15)	0.0227 (13)	0.0158 (11)	0.0095 (14)
C11	0.0445 (13)	0.0565 (16)	0.0406 (12)	0.0159 (12)	0.0112 (11)	0.0107 (11)
C12	0.0608 (18)	0.0446 (16)	0.0658 (19)	0.0244 (14)	-0.0077 (15)	-0.0124 (14)
C13	0.0312 (10)	0.0279 (10)	0.0243 (8)	0.0059 (8)	0.0085 (8)	0.0011 (7)
C14	0.0246 (9)	0.0262 (9)	0.0235 (8)	0.0019 (7)	0.0076 (7)	-0.0022 (7)
C15	0.0250 (9)	0.0236 (9)	0.0263 (9)	0.0029 (7)	0.0076 (7)	0.0053 (7)
C16	0.0301 (9)	0.0223 (9)	0.0298 (9)	0.0017 (7)	0.0096 (8)	-0.0042 (7)
C17	0.0245 (9)	0.0316 (10)	0.0291 (9)	0.0027 (8)	0.0104 (7)	-0.0043 (8)
C18	0.0379 (11)	0.0448 (13)	0.0345 (11)	0.0052 (10)	0.0120 (9)	-0.0106 (10)
C19	0.0436 (13)	0.0687 (18)	0.0267 (10)	0.0108 (12)	0.0134 (9)	-0.0070 (10)
C20	0.0446 (13)	0.0624 (16)	0.0304 (11)	0.0108 (11)	0.0202 (10)	0.0081 (10)
C21	0.0384 (11)	0.0418 (12)	0.0339 (11)	0.0039 (9)	0.0206 (9)	0.0070 (9)
C22	0.0236 (9)	0.0281 (10)	0.0359 (10)	-0.0003 (7)	0.0105 (8)	0.0082 (8)
C23	0.0213 (8)	0.0282 (10)	0.0332 (10)	-0.0005 (7)	0.0100 (8)	0.0026 (8)
C24	0.0251 (9)	0.0271 (10)	0.0446 (11)	-0.0018 (8)	0.0129 (9)	0.0012 (9)
C25	0.0257 (9)	0.0366 (11)	0.0373 (10)	-0.0043 (8)	0.0121 (8)	-0.0064 (9)
C26	0.0315 (11)	0.0415 (13)	0.0470 (13)	-0.0067 (9)	0.0099 (10)	-0.0123 (10)
C27	0.0541 (16)	0.0422 (15)	0.0723 (19)	-0.0112 (13)	0.0113 (14)	-0.0152 (14)
C28	0.0325 (12)	0.070 (2)	0.083 (2)	-0.0160 (13)	0.0170 (13)	-0.0335 (17)
C29	0.0725 (19)	0.0625 (19)	0.0508 (15)	-0.0115 (16)	0.0223 (14)	-0.0231 (14)
C30	0.0249 (9)	0.0385 (11)	0.0297 (9)	0.0011 (8)	0.0089 (8)	-0.0005 (8)
C31	0.0223 (9)	0.0333 (10)	0.0276 (9)	0.0034 (8)	0.0107 (8)	0.0026 (8)
C32	0.0273 (9)	0.0321 (11)	0.0312 (10)	0.0050 (8)	0.0093 (8)	0.0048 (8)
C33	0.0372 (12)	0.0412 (13)	0.0396 (12)	0.0103 (10)	0.0060 (10)	0.0066 (10)
C34	0.0391 (12)	0.0374 (12)	0.0503 (13)	0.0061 (10)	0.0198 (10)	0.0167 (10)
C35	0.0376 (11)	0.0367 (12)	0.0422 (12)	0.0145 (9)	0.0149 (10)	-0.0001 (9)

C36	0.0200 (8)	0.0288 (10)	0.0271 (9)	0.0009 (7)	0.0099 (7)	0.0003 (7)
C37	0.0367 (11)	0.0229 (10)	0.0462 (12)	0.0007 (8)	0.0165 (10)	0.0005 (8)
C38	0.094 (2)	0.0286 (13)	0.084 (2)	0.0047 (14)	0.0548 (19)	0.0088 (13)
C39	0.0674 (19)	0.070 (2)	0.0544 (16)	0.0051 (15)	0.0331 (15)	0.0131 (14)
C40	0.062 (2)	0.079 (3)	0.080 (2)	-0.0136 (18)	0.0171 (18)	0.0095 (19)

Geometric parameters (Å, °)

Mn1—O1	1.8532 (14)	C16—H16A	0.9900
Mn1—O2	1.8770 (14)	C16—H16B	0.9900
Mn1—O3	1.9958 (15)	C17—C18	1.389 (3)
Mn1—N1	2.1058 (16)	C18—C19	1.387 (4)
Mn1—O5	2.2434 (15)	C18—H18	0.9500
Mn1—N2	2.2543 (17)	C19—C20	1.379 (4)
O1—C1	1.337 (2)	C19—H19	0.9500
O2—C36	1.345 (2)	C20—C21	1.382 (3)
O3—C37	1.266 (3)	C20—H20	0.9500
O4—C37	1.253 (3)	C21—H21	0.9500
O5—H41A	0.9215	C22—C23	1.500 (3)
O5—H41B	0.9263	C22—H22A	0.9900
O6—C39	1.412 (4)	C22—H22B	0.9900
O6—H42	0.9153	C23—C24	1.395 (3)
N1—C16	1.484 (2)	C23—C36	1.400 (3)
N1—C22	1.504 (2)	C24—C25	1.388 (3)
N1—C15	1.506 (2)	C24—H24	0.9500
N2—C17	1.333 (3)	C25—C30	1.397 (3)
N2—C21	1.342 (3)	C25—C26	1.535 (3)
C1—C14	1.407 (3)	C26—C27	1.521 (4)
C1—C2	1.420 (3)	C26—C28	1.532 (3)
C2—C7	1.400 (3)	C26—C29	1.545 (4)
C2—C3	1.550 (3)	C27—H27A	0.9800
C3—C4	1.528 (4)	C27—H27B	0.9800
C3—C5	1.533 (4)	C27—H27C	0.9800
C3—C6	1.541 (3)	C28—H28A	0.9800
C4—H4A	0.9800	C28—H28B	0.9800
C4—H4B	0.9800	C28—H28C	0.9800
C4—H4C	0.9800	C29—H29A	0.9800
C5—H5A	0.9800	C29—H29B	0.9800
C5—H5B	0.9800	C29—H29C	0.9800
C5—H5C	0.9800	C30—C31	1.391 (3)
C6—H6A	0.9800	C30—H30	0.9500
C6—H6B	0.9800	C31—C36	1.422 (3)
C6—H6C	0.9800	C31—C32	1.536 (3)
C7—C8	1.396 (3)	C32—C35	1.530 (3)
C7—H7	0.9500	C32—C33	1.531 (3)
C8—C13	1.394 (3)	C32—C34	1.534 (3)
C8—C9	1.541 (3)	C33—H33A	0.9800
C9—C12	1.507 (4)	C33—H33B	0.9800
C9—C11	1.539 (3)	C33—H33C	0.9800

supplementary materials

C9—C10	1.539 (4)	C34—H34A	0.9800
C10—H10A	0.9800	C34—H34B	0.9800
C10—H10B	0.9800	C34—H34C	0.9800
C10—H10C	0.9800	C35—H35A	0.9800
C11—H11A	0.9800	C35—H35B	0.9800
C11—H11B	0.9800	C35—H35C	0.9800
C11—H11C	0.9800	C37—C38	1.506 (3)
C12—H12A	0.9800	C38—H38A	0.9800
C12—H12B	0.9800	C38—H38B	0.9800
C12—H12C	0.9800	C38—H38C	0.9800
C13—C14	1.394 (3)	C39—C40	1.501 (5)
C13—H13	0.9500	C39—H39A	0.9900
C14—C15	1.504 (3)	C39—H39B	0.9900
C15—H15A	0.9900	C40—H40A	0.9800
C15—H15B	0.9900	C40—H40B	0.9800
C16—C17	1.508 (3)	C40—H40C	0.9800
O1—Mn1—O2	177.70 (6)	N2—C17—C18	122.0 (2)
O1—Mn1—O3	88.60 (6)	N2—C17—C16	116.18 (17)
O2—Mn1—O3	89.65 (6)	C18—C17—C16	121.6 (2)
O1—Mn1—N1	89.26 (6)	C19—C18—C17	118.5 (2)
O2—Mn1—N1	92.70 (6)	C19—C18—H18	120.7
O3—Mn1—N1	170.77 (6)	C17—C18—H18	120.7
O1—Mn1—O5	90.40 (6)	C20—C19—C18	119.4 (2)
O2—Mn1—O5	88.25 (6)	C20—C19—H19	120.3
O3—Mn1—O5	94.41 (6)	C18—C19—H19	120.3
N1—Mn1—O5	94.59 (6)	C19—C20—C21	118.7 (2)
O1—Mn1—N2	91.08 (7)	C19—C20—H20	120.7
O2—Mn1—N2	90.47 (6)	C21—C20—H20	120.7
O3—Mn1—N2	92.22 (6)	N2—C21—C20	122.2 (2)
N1—Mn1—N2	78.84 (6)	N2—C21—H21	118.9
O5—Mn1—N2	173.24 (6)	C20—C21—H21	118.9
C1—O1—Mn1	134.32 (13)	C23—C22—N1	112.42 (16)
C36—O2—Mn1	124.42 (12)	C23—C22—H22A	109.1
C37—O3—Mn1	128.95 (14)	N1—C22—H22A	109.1
Mn1—O5—H41A	116.2	C23—C22—H22B	109.1
Mn1—O5—H41B	96.1	N1—C22—H22B	109.1
H41A—O5—H41B	98.1	H22A—C22—H22B	107.9
C39—O6—H42	105.3	C24—C23—C36	121.28 (18)
C16—N1—C22	109.90 (15)	C24—C23—C22	121.74 (19)
C16—N1—C15	110.22 (14)	C36—C23—C22	116.98 (18)
C22—N1—C15	107.91 (14)	C25—C24—C23	120.8 (2)
C16—N1—Mn1	111.93 (12)	C25—C24—H24	119.6
C22—N1—Mn1	107.80 (11)	C23—C24—H24	119.6
C15—N1—Mn1	108.97 (11)	C24—C25—C30	116.91 (19)
C17—N2—C21	119.11 (19)	C24—C25—C26	123.2 (2)
C17—N2—Mn1	112.33 (13)	C30—C25—C26	119.9 (2)
C21—N2—Mn1	127.22 (15)	C27—C26—C28	109.2 (2)
O1—C1—C14	121.37 (17)	C27—C26—C25	112.2 (2)
O1—C1—C2	118.80 (18)	C28—C26—C25	110.1 (2)

C14—C1—C2	119.83 (18)	C27—C26—C29	108.1 (2)
C7—C2—C1	117.6 (2)	C28—C26—C29	108.9 (2)
C7—C2—C3	122.53 (19)	C25—C26—C29	108.4 (2)
C1—C2—C3	119.92 (19)	C26—C27—H27A	109.5
C4—C3—C5	109.5 (2)	C26—C27—H27B	109.5
C4—C3—C6	108.1 (2)	H27A—C27—H27B	109.5
C5—C3—C6	106.4 (2)	C26—C27—H27C	109.5
C4—C3—C2	109.9 (2)	H27A—C27—H27C	109.5
C5—C3—C2	111.0 (2)	H27B—C27—H27C	109.5
C6—C3—C2	111.8 (2)	C26—C28—H28A	109.5
C3—C4—H4A	109.5	C26—C28—H28B	109.5
C3—C4—H4B	109.5	H28A—C28—H28B	109.5
H4A—C4—H4B	109.5	C26—C28—H28C	109.5
C3—C4—H4C	109.5	H28A—C28—H28C	109.5
H4A—C4—H4C	109.5	H28B—C28—H28C	109.5
H4B—C4—H4C	109.5	C26—C29—H29A	109.5
C3—C5—H5A	109.5	C26—C29—H29B	109.5
C3—C5—H5B	109.5	H29A—C29—H29B	109.5
H5A—C5—H5B	109.5	C26—C29—H29C	109.5
C3—C5—H5C	109.5	H29A—C29—H29C	109.5
H5A—C5—H5C	109.5	H29B—C29—H29C	109.5
H5B—C5—H5C	109.5	C31—C30—C25	124.75 (19)
C3—C6—H6A	109.5	C31—C30—H30	117.6
C3—C6—H6B	109.5	C25—C30—H30	117.6
H6A—C6—H6B	109.5	C30—C31—C36	116.89 (19)
C3—C6—H6C	109.5	C30—C31—C32	121.61 (17)
H6A—C6—H6C	109.5	C36—C31—C32	121.48 (18)
H6B—C6—H6C	109.5	C35—C32—C33	107.83 (18)
C8—C7—C2	123.54 (19)	C35—C32—C34	109.6 (2)
C8—C7—H7	118.2	C33—C32—C34	107.51 (19)
C2—C7—H7	118.2	C35—C32—C31	109.09 (17)
C13—C8—C7	117.34 (18)	C33—C32—C31	112.17 (18)
C13—C8—C9	119.4 (2)	C34—C32—C31	110.61 (17)
C7—C8—C9	123.19 (19)	C32—C33—H33A	109.5
C12—C9—C11	109.7 (3)	C32—C33—H33B	109.5
C12—C9—C10	109.3 (2)	H33A—C33—H33B	109.5
C11—C9—C10	107.0 (2)	C32—C33—H33C	109.5
C12—C9—C8	110.81 (18)	H33A—C33—H33C	109.5
C11—C9—C8	107.95 (18)	H33B—C33—H33C	109.5
C10—C9—C8	112.0 (2)	C32—C34—H34A	109.5
C9—C10—H10A	109.5	C32—C34—H34B	109.5
C9—C10—H10B	109.5	H34A—C34—H34B	109.5
H10A—C10—H10B	109.5	C32—C34—H34C	109.5
C9—C10—H10C	109.5	H34A—C34—H34C	109.5
H10A—C10—H10C	109.5	H34B—C34—H34C	109.5
H10B—C10—H10C	109.5	C32—C35—H35A	109.5
C9—C11—H11A	109.5	C32—C35—H35B	109.5
C9—C11—H11B	109.5	H35A—C35—H35B	109.5
H11A—C11—H11B	109.5	C32—C35—H35C	109.5

supplementary materials

C9—C11—H11C	109.5	H35A—C35—H35C	109.5
H11A—C11—H11C	109.5	H35B—C35—H35C	109.5
H11B—C11—H11C	109.5	O2—C36—C23	118.68 (17)
C9—C12—H12A	109.5	O2—C36—C31	122.21 (18)
C9—C12—H12B	109.5	C23—C36—C31	119.10 (18)
H12A—C12—H12B	109.5	O4—C37—O3	124.5 (2)
C9—C12—H12C	109.5	O4—C37—C38	119.5 (2)
H12A—C12—H12C	109.5	O3—C37—C38	115.9 (2)
H12B—C12—H12C	109.5	C37—C38—H38A	109.5
C14—C13—C8	121.6 (2)	C37—C38—H38B	109.5
C14—C13—H13	119.2	H38A—C38—H38B	109.5
C8—C13—H13	119.2	C37—C38—H38C	109.5
C13—C14—C1	120.08 (18)	H38A—C38—H38C	109.5
C13—C14—C15	118.51 (18)	H38B—C38—H38C	109.5
C1—C14—C15	121.34 (17)	O6—C39—C40	114.5 (3)
C14—C15—N1	113.64 (15)	O6—C39—H39A	108.6
C14—C15—H15A	108.8	C40—C39—H39A	108.6
N1—C15—H15A	108.8	O6—C39—H39B	108.6
C14—C15—H15B	108.8	C40—C39—H39B	108.6
N1—C15—H15B	108.8	H39A—C39—H39B	107.6
H15A—C15—H15B	107.7	C39—C40—H40A	109.5
N1—C16—C17	113.15 (16)	C39—C40—H40B	109.5
N1—C16—H16A	108.9	H40A—C40—H40B	109.5
C17—C16—H16A	108.9	C39—C40—H40C	109.5
N1—C16—H16B	108.9	H40A—C40—H40C	109.5
C17—C16—H16B	108.9	H40B—C40—H40C	109.5
H16A—C16—H16B	107.8		

Hydrogen-bond geometry (\AA , $^\circ$)

$D-H\cdots A$	$D-H$	$H\cdots A$	$D\cdots A$	$D-H\cdots A$
O5—H41A \cdots O6 ⁱ	0.92	1.91	2.799 (2)	160
O6—H42 \cdots O4 ⁱⁱ	0.91	1.81	2.723 (3)	171
O5—H41B \cdots O4	0.93	1.79	2.677 (2)	160
C4—H4B \cdots O1	0.98	2.36	2.991 (4)	122
C5—H5C \cdots O1	0.98	2.28	2.929 (3)	123
C15—H15B \cdots O5	0.99	2.54	3.202 (3)	124
C34—H34C \cdots O2	0.98	2.45	3.102 (3)	123
C35—H35A \cdots O2	0.98	2.32	3.010 (3)	126

Symmetry codes: (i) $-x+1, y-1/2, -z+3/2$; (ii) $x, y+1, z$.

Fig. 1

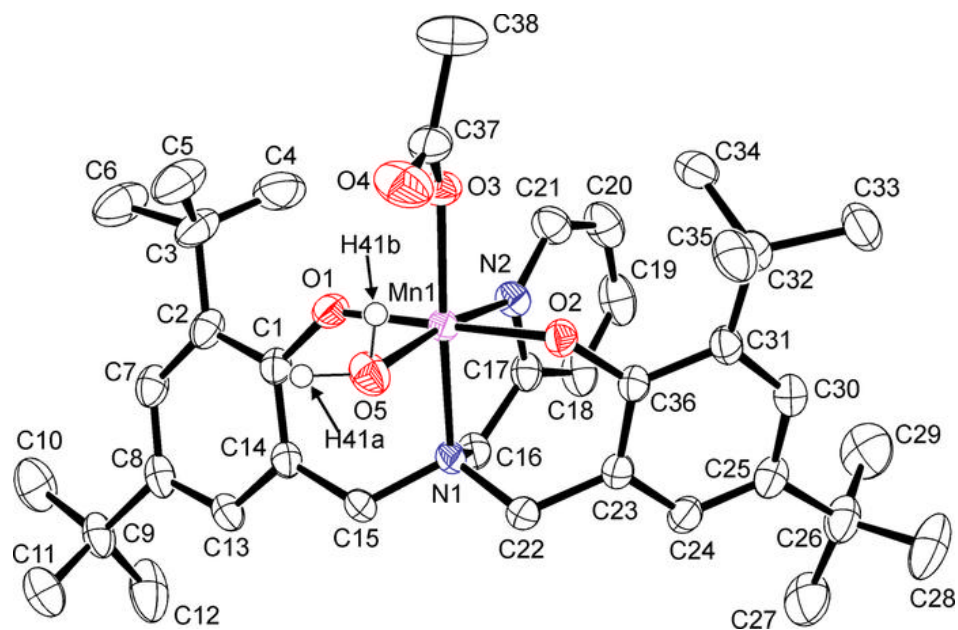


Fig. 2

