



GREEN MAP[®]

Green Mapmaking for CU EXPO

Green Maps highlight natural, cultural, social and green living sites using Green Map System's global icons and tools. Print maps are unique!



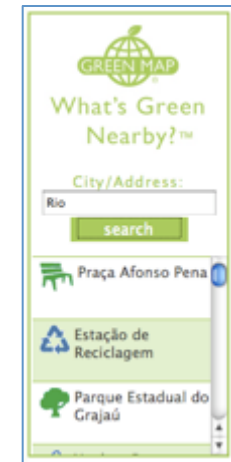
862 cities in 65 countries are registered



Made by local city agencies, NGOs, schools, enterprises, tourism and community groups, each Green Map project has their own goals

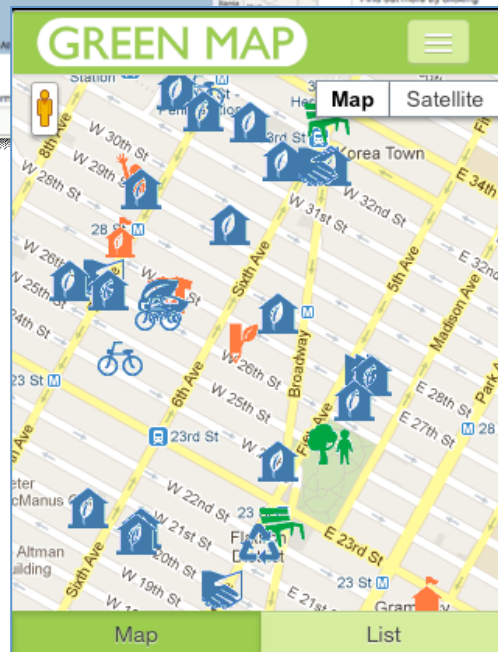


Interactive Open Green Maps can be created on our mapping platform & used online, on mobile phones or as embedded maps using widgets

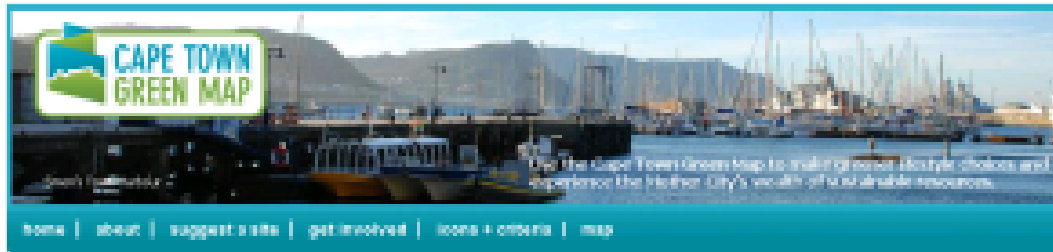


31,000 sites
340 maps
37 countries

New 
at GreenMap.org on your phone



The City of Cape Town used a mix of our tools to reach residents and visitors, producing an Open Green Map and 4 printed editions



Explore Cape Town's green spaces, nature reserves, organic eateries, farmers' markets, recycling drop-off, sustainable living projects, eco products and other green choices by clicking the map's icons. View a larger version of the map, with a search function.



Icons © GreenMap Icons, Inc. 2005. All rights reserved. Green Map® is a registered trademark and service mark.

Cape Winelands first African region to join global Biodiversity program



On the 28th of May, Elizabeth Johnson, Executive Mayor of The Cape Winelands District Municipality signed an agreement that would make the Municipality a

participant in an international program called Local Action for Biodiversity (LAB).

Very rich species diversity is found in South Africa. The country has almost 10% of the world's total bird species, 20% and plant species as well as one of the world's mammal and reptile species.

Featured Icon



Water Recycling

Use plants, aquatic animals, layered soil, movement, constructed wetlands and soil to absorb, filter and purify water, without adding chemicals.

Systems that do the damage in the built environment, grey water, rainwater gardens, rain barrels and other types of high and low technology water recycling systems that reduce consumption can be included.

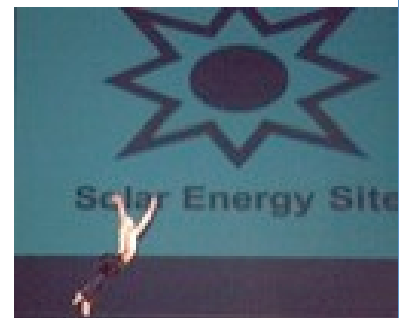
Read more...



Photography: © LARRY STRICKLAND, WINDHOLM PARK
Cape Town residents make's top 100 list



Green Map projects have produced cultural events, workshops, tours, youth contests, performances, videos and more



We provide all Green Mapmakers with adaptable, engaging tools for professional, community and youth mapping projects, including:



Icons, Guides, Infrastructure, Multimedia Resources, Archives, Strategic Consulting, Workshops, Event Support and more



Every project uses award-winning Green Map Icons to identify, promote and link thousands of assets and challenges



multi-lingual posters at GreenMap.org/icons



Barcelona's Sun Factory



Farmers & Artisans Market



Robeson US's kayak tours



Yogyakarta ID's Geologic Feature



Breda NL's Eco Center



Fuel Alternatives

SUSTAINABLE LIVING

Green Economy



Mobility



Technology & Design



Hazards & Challenges



NATURE

Land & Water



Flora



Fauna



Outdoor Activities



CULTURE & SOCIETY

Cultural Character



Justice & Activism



Eco-Information



Public Works & Landmarks



170 Green Map Icons are provided as a font, images or GIS script.
Use them in your GIS map, on education and outreach resources



Sustainable Living, Nature, Culture & Society



Eco Products



Climate Changed Area



Bike Site



Natural/Greenway



Farm Animals



Food Bank



Eco Expert



Green Building

Awards for Green Map System



10 Days of Climate Action 2012

Victor J Papanek Social Design Award 2011

US National Sustainability Award:
New Communications Tools

United Nations Global Best Practices 100

The Tech Awards Laureate

Spirit of the Land - Salt Lake City Olympics

EXPO 2000 Project Award the World

Open Green Map's awards

Treehugger Best of Green 2011

Living Labs Global 2010

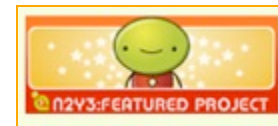
INDEX Awards Finalist 2009

Cause / Affect

Tele Atlas Maps in Apps

NetSquared

We Media Pitch It

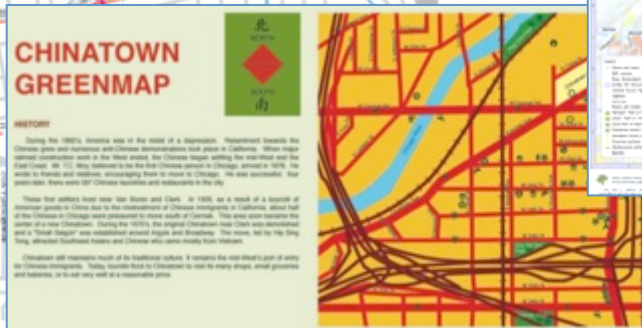
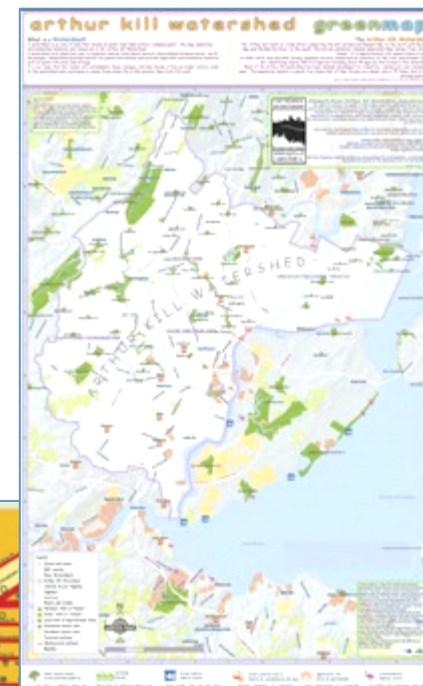


Green Mapmakers Who Are a University or College

This list shows Green Mapmakers around the world. Click to view their profile, which includes links

- **Surabaya**
Housing and Human Settlement Center, Petra Christian University
- **GreenMapUji**
GreenMapUji
- **Azabu University**
Azabu University
- **Guangdong Coastal Mangrove Wetlands**
华南理工大学fresh环保协会红树林保育项目组
- **NYU Tourism Maps**
New York University/Tisch Center
- **Tokyo Japan**
Tama Art University Urban Design Lab
- **University of Ottawa GSG**
University of Ottawa
- **Fresh Green Map of Guangzhou**
Fresh Environmental Protection Association in South China University of Technology
- **Curitiba Brasil**
Departamento de Ciência e Gestão da Informação - DECIGI - UFPR
- **Richmond Virginia Green Map**
Virginia Commonwealth University
- **Keweenaw Peninsula Michigan**
Finlandia University Sustainable Keweenaw Resource Center (SKRC)
- **NYC DESIS Lab**
DESI Lab - Parsons The New School for Design
- **UMSL St Louis County Green Map**
CHERP Urban Ecology Class, Pierre Laclède Honors College, UMSL
- **Ogden Utah**
Ogden Green Map Project
- **Tacoma Washington USA**
University of Washington Tacoma
- **Maejo University**
Maejo University
- **Jiangxi Normal University - China Blue Sky**
Jiangxi Normal University - China Blue Sky
- **Newcastle University Australia**
Geography and Environmental Studies, University of Newcastle, Australia
- **Chico California**
Butte College
- **HeFei CHINA**
Green Urban Planning Group of Hefei University of Technology
- **Sustainability University of Guelph**
Sustainability Office - University of Guelph
- **Tibet Green Map**
Tibet Ecotourism Project Columbia University
- **China University of Technology General E...**
China University of Technology General Education Center
- **Azabu University Sagamihara**
Azabu University Sagamihara
- **Idgreenteam**
Greenteam of Lanzhou University
- **Seattle**
University of Washington Earth Club
- **Sustainable Food in NYC**
Irie
- **Denpasar**
Universitas Hindu Indonesia
- **Long Beach California**
Long Beach Green Map
- **Loyola University Maryland**
Loyola University Maryland
- **Tirana Albania**
University of Florida, Department of Urban and Regional Planning
- **HoChiMinh City**
Montclair State University Dept. of Earth & Environmental Studies
- **Lalibela Ethiopia**
Project Wuopur
- **Northeast Normal University**
Green Vitality Environment Protection Association
- **si.asb**
SB
- **PLUM**
Kitakyushu Manabito ESD Station
- **Florianopolis Brazil**
Florianopolis Green Map Project

Graphic design, Environmental Studies, Geography, Landscape architecture, Urban studies, Community Engaged Research



Glasgow School of Art – product design class takes on charity shops as client –see GreenMap.org/impacts



26. Dear Green Place | Glasgow, Scotland, UNITED KINGDOM

Reusables Categorized and Mapped

Radius Glasgow | info@deargreenplace.org
<http://deargreenplace.org>
 Author: Glasgow Green Map team



Background: More than 100 Reuse Shops Discovered

Glasgow, Glaschu in Gaelic meaning "dear green place" is the largest city in Scotland. Despite the many parks and green spaces the city is far from being green in a truly sustainable sense. With a motorway extension underway and massive program of regeneration focused on developing Glasgow as the retail capital of Scotland, environmental sustainability is

consistently overlooked.

Given the city's size, the first Glasgow-wide Green Map is a thematic map focusing on Reuse. Marketed under the brand Dear Green Place, it features over 100 charity shops, community enterprises and grassroots environmental organisations who provide reuse opportuni-

ties. The map aims to raise public awareness of this under-appreciated sector and the social, economic and environmental benefits they bring to the city.

20,000 copies of the Green Map are being distributed through a network of charity shops, libraries and community events.



Glasgow's Dear Green Place Map, front and back



Charity shop after charity shop, the mapmakers spent up!

Impacts: Design Transformation

Icons representing 14 categories of household items have been created for the project. Arranged in a standard grid, they help people identify where to donate and buy reusable goods more effectively. In addition, graphics encouraging people to use public transport, cycle and walk were incorporated into the map.

The map has been developed in collaboration with the Glas-

gow Community Recycling Forum, Glasgow School of Art and Generous Scotland – a national program promoting waste awareness in charity shops. The project was coordinated by a small team of volunteer Mapmakers and supported by the creative organisation Radius Glasgow. To inform the design process, university students worked in charity shops and tested out design

concepts with customers.

This is the first time that comprehensive information about reuse opportunities has been provided in such an accessible format. The project has increased liaison between the featured organisations and generated publicity for them, many of whom operate with very limited marketing budgets.

The data and design of the printed map formed the basis of a web-based version to follow.



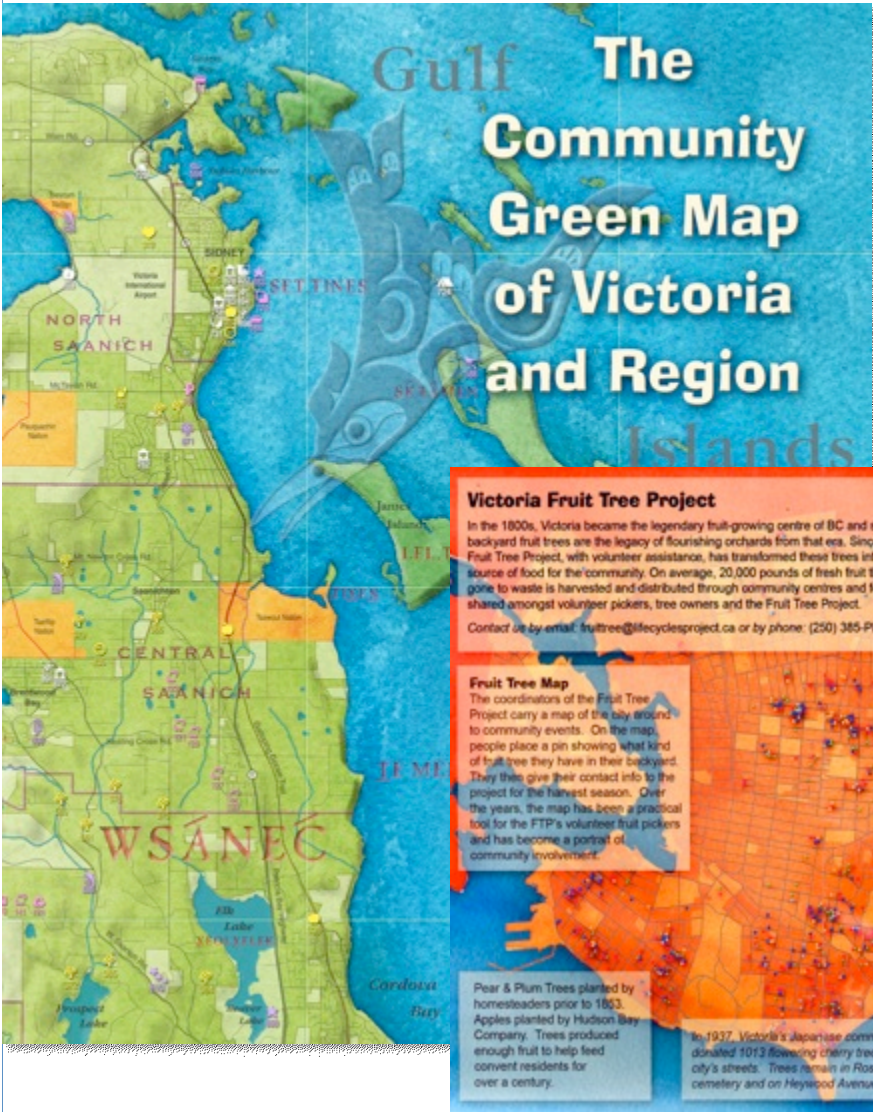
GREEN MAP impacts

Reinvigorating communities around the world



The Pollokshields Tree Trail Map - created by members of the Pollokshields community

UVic OCER & Geography address social crises by amplifying others' perspective of the commons



Victoria Fruit Tree Project

In the 1800s, Victoria became the legendary fruit-growing centre of BC and stately old backyard fruit trees are the legacy of flourishing orchards from that era. Since 1998 the Fruit Tree Project, with volunteer assistance, has transformed these trees into a valuable source of food for the community. On average, 20,000 pounds of fresh fruit that might have gone to waste is harvested and distributed through community centres and food banks, and shared amongst volunteer pickers, tree owners and the Fruit Tree Project.

Contact us by email: fruittree@lifecyclesproject.ca or by phone: (250) 385-PICK (7425)

Fruit Tree Map

The coordinators of the Fruit Tree Project carry a map of the city around to community events. On the map, people place a pin showing what kind of fruit tree they have in their backyard. They then give their contact info to the project for the harvest season. Over the years, the map has been a practical tool for the FTP's volunteer fruit pickers and has become a portrait of community involvement.

Pear & Plum Trees planted by homesteaders prior to 1863. Apples planted by Hudson Bay Company. Trees produced enough fruit to help feed convent residents for over a century.

In 1937, Victoria's Japanese community donated 1013 flowering cherry trees for the city's streets. Trees remain in Ross Bay cemetery and on Heywood Avenue.

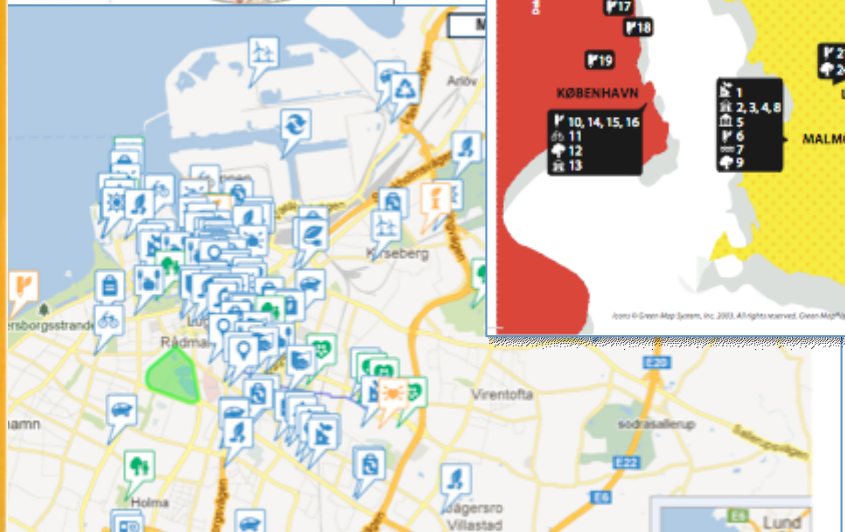
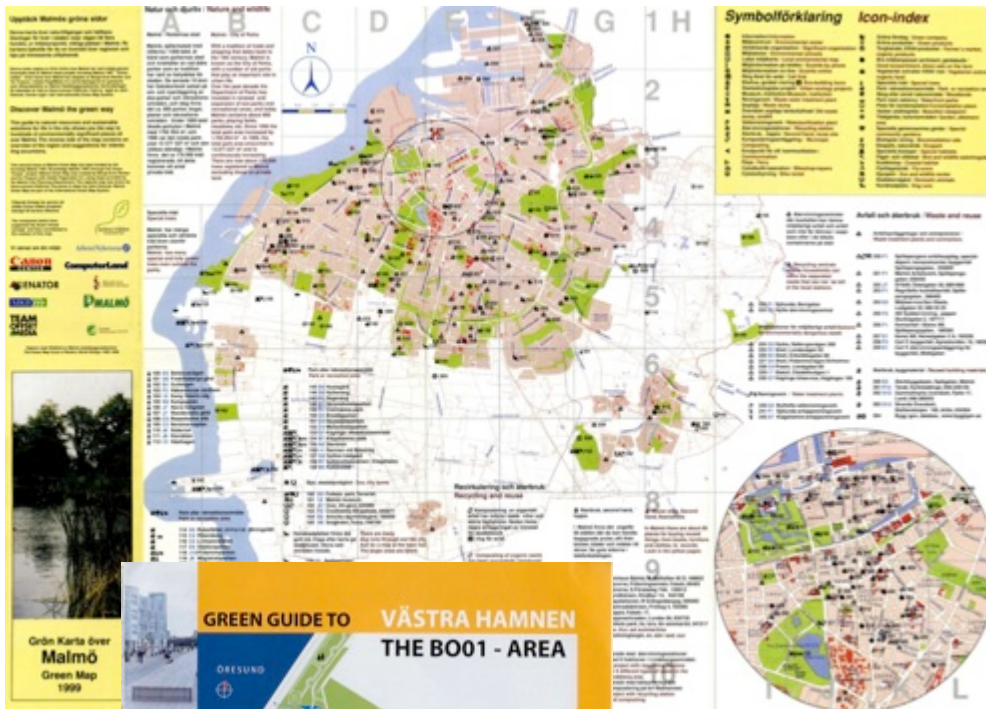
"Father pruned the cherry tree under the bedroom window. The cherry sticks were twisty but I took three of the straightest, set them at one end and straddled them at the other and put two big nails in the wood to hold a drawing board. With this easel under the dormer window of our bedroom I felt completely an artist."

Emily Carr, whose father planted fruit trees across James Bay.

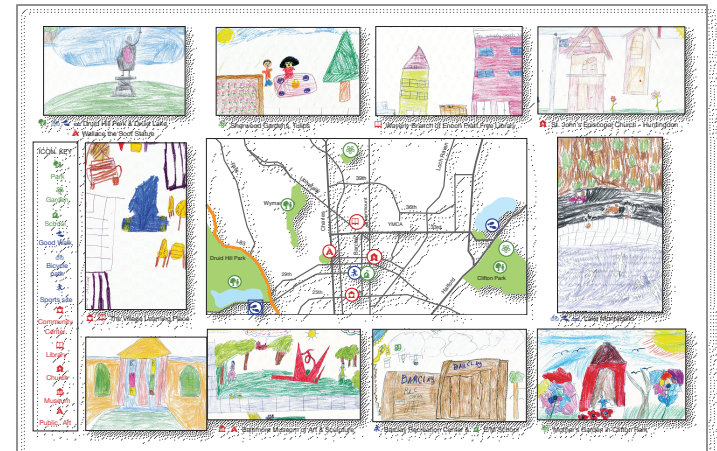
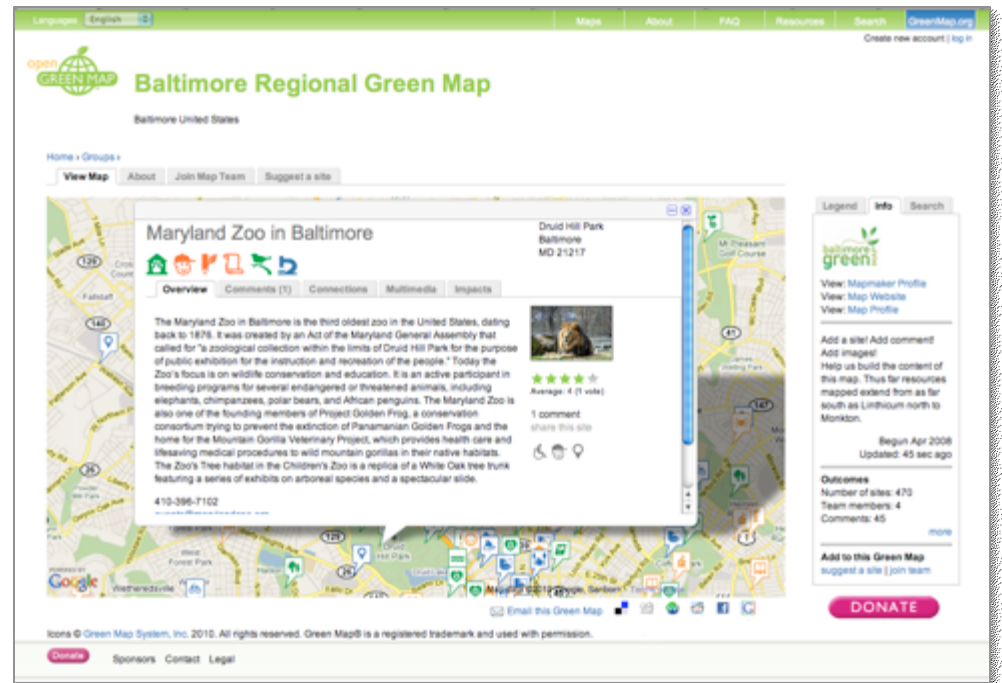
LifeCycles Project Society
sustaining communities



Malmö Sweden's Open Green Map focuses on climate change. Print maps highlight development and in 2013, regional ESD (education for sust dev)

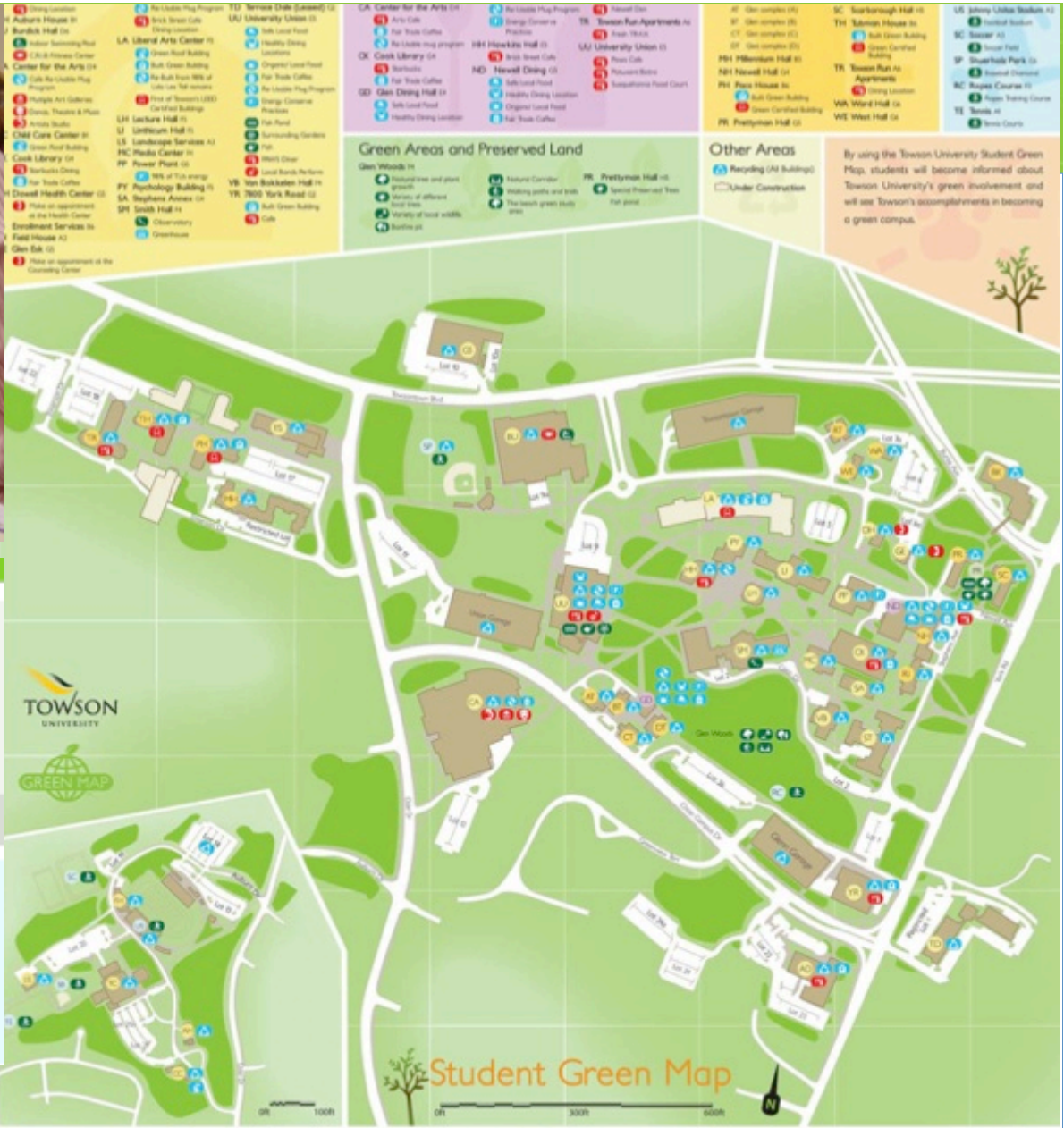


Example: Baltimore Green Map. Even a one-person project can turn a labor of love into a livelihood (with the help of interns!)





Funded! This project successfully raised its funding goal on Jul 27, 2012.



208 backers
\$9,854 pledged of \$9,500 goal
0 seconds to go

Funding period
 Jun 6, 2012 - Jul 27, 2012

Project by
Janet Felsten
 Baltimore, MD
[Contact me](#)

First created - 6 backed
 Janet Felsten 240 tweets
 Website: [baltogreenmap.org](#)
[See full bio](#)

Share [42](#) [Tweet](#) [Embed](#) [Remind me](#)

If you want to entice YOU to experience nature, culture, history, and recreation in this wonderful 745-acre park in central Baltimore.



Green Mapmakers address chronic issues impacting biodiversity, water, land use and more. China's Mangrove Conservation Network & WWF



她吃了飯後，將興趣與熱情的小紙連成書。她說：“等我長大，我要繪製本國的圖。這將是你對環境的貢獻。而綠地圖則是由來自各地的專家和志願者共同繪製的。我拿了二盒的紙，想請你給我一些。環保包裝紙給我。她將興趣與熱情的小紙連成書。她說：“等我長大，我要繪製本國的圖。這將是你對環境的貢獻。而綠地圖則是由來自各地的專家和志願者共同繪製的。我拿了二盒的紙，想請你給我一些。環保包裝紙給我。她將興趣與熱情的小紙連成書。她說：“等我長大，我要繪製本國的圖。這將是你對環境的貢獻。而綠地圖則是由來自各地的專家和志願者共同繪製的。我拿了二盒的紙，想請你給我一些。環保包裝紙給我。

38 版·方向
聰明垃圾桶

這款智能垃圾桶可以通過超聲波感應位置，根據使用者將要投擲的垃圾大小，打開相應大小的開口，避免過多種類散出。而垃圾桶內的紅外線感應器還能檢測到垃圾桶子裏的垃圾收納程度，讓垃圾桶顯示出不同強度的顏色，提醒使用者該清理垃圾了。

■圖為松柏中學初二學生潘興(右)和他的同班同學林偉，向我們展示綠地圖國際通用標示。他們幾位中學生上星期開始並組織了仙霞社區綠地圖的繪制工作。



At NYU, Tourism Management students have created Green Maps to spur economic development around the world



English / Español / 中文 Chinese / 日本語 Japanese / Bahasa Indonesian

DIRECTIONS TO A SUSTAINABLE FUTURE



- Maps
- Mapmakers
- About
- Resources
- Participate
- News
- Services

Influencing Tourism Education

- view
- edit
- outline
- track

With 170 globally designed icons that are categorized into various themes, Green Map System is not only a great tool for sustainable development, but also a helpful assistant for tourism professionals. Professor Prohaska at New York University has introduced Green Map System into her [Tourism Product Development class](#) for several semesters, and has successfully equipped her students with the skills of identifying tourism resources and developing new tourism products by utilizing Green Map System.



After two class-wide projects: one on East Village that focuses on Eco-Culture sites, and the other on Lower East Manhattan that focuses on the cultural sites in different heritage neighborhoods, Professor Prohaska created the individual assignment for Spring 2012 where students were encouraged to dig into the tourism gems in their respective hometowns. Benefited from the variety of students' backgrounds, maps across four continents were developed by the end of the semester.

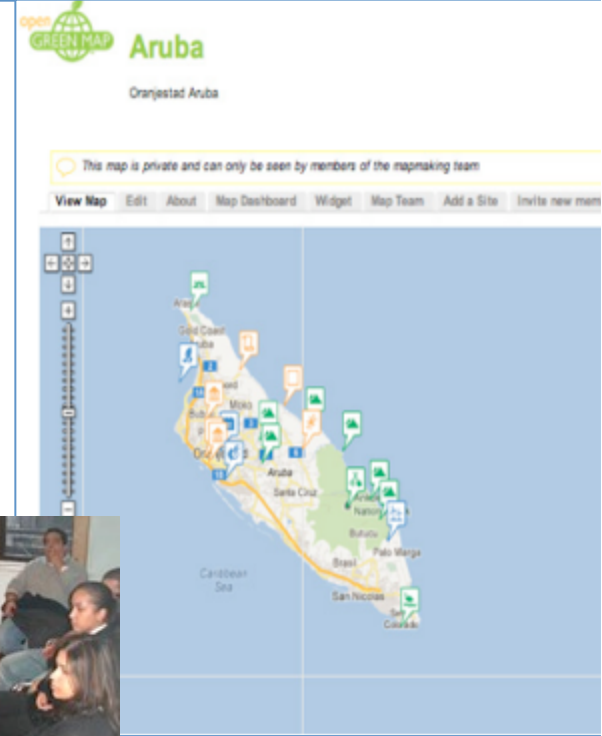
Working within Professor Prohaska's account, these maps were created:

- two African maps: a bush area in South Africa and the cultural sites of Cameroon;
- in Asia, a map of the natural and green sites of Singapore and a map on the historic sites in Beijing Olympic Park
- in the Americas, a Brasilia map focused on the wonderful architectures of this Latin American city while the Saint Lucia and Aruba maps were made to share the beauties offered by the Caribbean sea;
- and of course, New York City was not left out thanks to a Brooklyn green shopping map deepens students' knowledge about NYC.

While most of the maps are still held private as they are part of students' class projects, all are pictured on the attached PDF. Two have been made live and open to the public: the [Paraty & The Vredefort Dome Green Map in South Africa](#) and the [Saint Lucia Green Map](#). The Open Green Map offered a visual and straightforward method for tourism students to locate the tourism resources; the innovative Green Map Icons also helped them to identify the significances of each site, where creative ideas of new themed tourism products can be developed. Although the class is already over, students' journeys of advancing the "green mapping skills" have just begun. Blog by Hui

Attachment Size

- DONATE
- STORE
- GO MOBILE!
- Who's online
- There are currently 1 Mapmaker and 719 guests online.
- Wendy at Green Map
- My Green Map



University student interns have worked with youth Green Maps addressing tough issues, including our garbage crisis, waterfront access and air quality



New York City

Are We Trashing the Apple?

Explore NYC's Garbage Crisis with Recycle-A-Bicycle



North Brooklyn Recycle-A-Bicycle
Mapping the Impact to Help for New York City's environment
New York City Department of Environmental Protection
www.nyc.gov/doepp

REDUCE

- Buy less stuff
- Don't buy what you don't need
- Buy only what you really need
- Buy less than you need
- Buy things that last longer
- Buy things that are made to last
- Buy things that are made to be repaired
- Buy things that are made to be recycled

RECYCLE

- Recycle paper and cardboard
- Recycle plastic bottles and containers
- Recycle glass bottles and jars
- Recycle metal cans and containers
- Recycle electronics
- Recycle appliances
- Recycle tires
- Recycle yard waste

Mapping the Garbage Trail



1. Fresh Kills Landfill
When this landfill closed in 2001, all the garbage trash that was not recycled, burned, and all other trash will go to this site to make these garbage mountains rise again. The landfill is a very important place to visit. Students can see the mountains of garbage and will understand the impact of our waste. It will also help them to see the impact of our waste on the environment.

2. Fresh Kills
This is a very important place to visit. Students can see the mountains of garbage and will understand the impact of our waste. It will also help them to see the impact of our waste on the environment.

3. Fresh Kills
This is a very important place to visit. Students can see the mountains of garbage and will understand the impact of our waste. It will also help them to see the impact of our waste on the environment.

4. Fresh Kills
This is a very important place to visit. Students can see the mountains of garbage and will understand the impact of our waste. It will also help them to see the impact of our waste on the environment.

The Garbage Crisis

The average New York City resident produces 6.9 pounds of garbage daily.

Since 1980, garbage has been piling up faster than ever. In fact, it is now so bad that it is starting to pollute our air and water. This is a real problem that we need to solve.

1. Reduce
Buy less stuff. Don't buy what you don't need. Buy only what you really need. Buy less than you need. Buy things that last longer. Buy things that are made to last. Buy things that are made to be repaired. Buy things that are made to be recycled.

2. Recycle
Recycle paper and cardboard. Recycle plastic bottles and containers. Recycle glass bottles and jars. Recycle metal cans and containers. Recycle electronics. Recycle appliances. Recycle tires. Recycle yard waste.

Don't Dump on Our Community



Newtown Creek

1. Fresh Kills
This is a very important place to visit. Students can see the mountains of garbage and will understand the impact of our waste. It will also help them to see the impact of our waste on the environment.

2. Fresh Kills
This is a very important place to visit. Students can see the mountains of garbage and will understand the impact of our waste. It will also help them to see the impact of our waste on the environment.

3. Fresh Kills
This is a very important place to visit. Students can see the mountains of garbage and will understand the impact of our waste. It will also help them to see the impact of our waste on the environment.

4. Fresh Kills
This is a very important place to visit. Students can see the mountains of garbage and will understand the impact of our waste. It will also help them to see the impact of our waste on the environment.



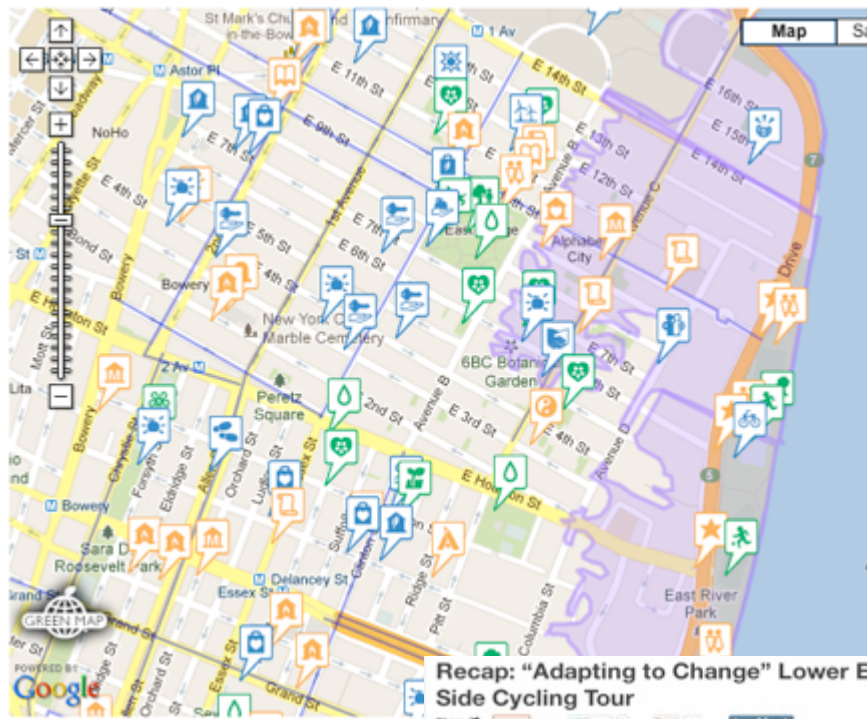
Space to Breathe ~ El Espacio de Respirar



Recycling and Biking by Kids for New York City's Environment



In NYC, the Green Map project collaborated with Parks to create 'Adapting to Change' post-Sandy map and tour series



Recap: "Adapting to Change" Lower East Side Cycling Tour

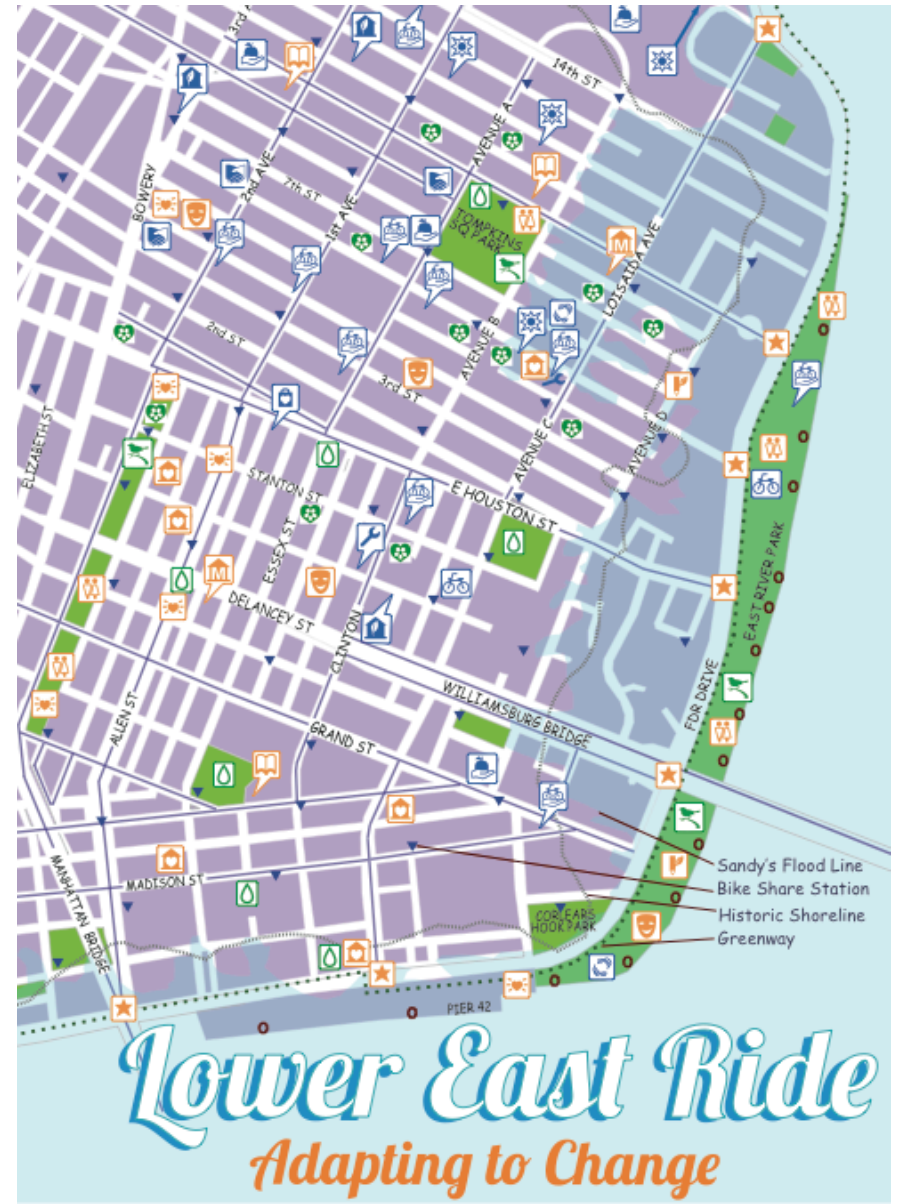
Posted on December 6th, 2012 by Lori Greenberg and David Bergman



Trees w/Parsons



Center: Wendy Brauer of the Green Map System, addressing the crowd. Photo: David Bergman
 In the immediate post-Sandy days, bicycles were the best means of transportation, and so it was appropriate that the Green Map System's "Adapting to Change" tour of the Lower East Side, held this past Sunday, traveled by bike. The mostly helmeted participants gathered at Tompkins Square Park for a two-plus hour guided ride of gardens, green buildings and composting as well as storm damage.
 Organized by Wendy Brauer, long-time LES resident and founder of the Green Map System, the tour's



Open Green Maps can be made on a rolling basis, with space for public images, comments and assessments on every site



SITE FEATURES

Union Square Greenmarket
17th St & Broadway
New York, NY
212-788-7900

Overview Comments (4) Connections Multimedia Impacts

Come shop for local and organic produce at one of the biggest, year-round greenmarkets in NYC.

Shop local at the Greenmarket to keep NYC and its bioregion green. By shopping here, you will also be eating seasonally and reducing the impacts of transporting produce to your table. You will be supporting small family farmers as you experience the season's change and enjoy the scent of herbs and locally-grown flowers, too!

<http://GrowNYC.org>

NYC's Green Apple Map
added 09/2009 by Green Apple Mapmakers

4 comments
share this site

ICONS

Rollover each Green Map Icon to learn about sustainability

SOCIAL INCLUSION

Site accessibility indicators for children, disabled, public transit, free, and more.

CONNECTIONS

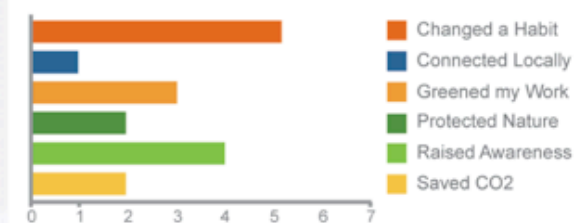
Compare this site to others for inspiration and learning

MULTIMEDIA

Share images, videos, PDFs, podcasts about each site.

IMPACTS

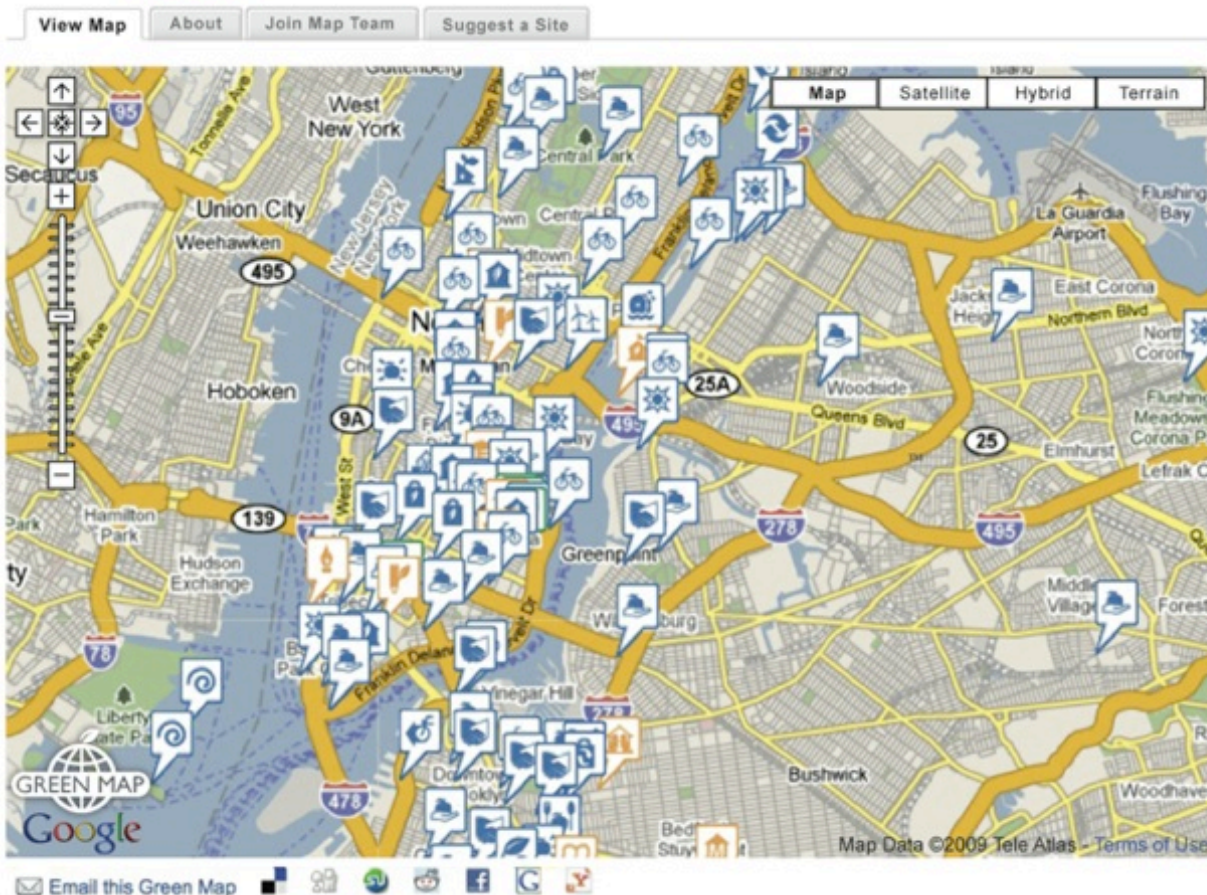
See how this site has changed people and the community.



Register at GreenMap.org/join



USING THE MAP



Use our engagement resources, graphics, events and PR tools for involving your community and media!



Think Global, Map Local!



GreenMap.org

info@greenmap.org

+1 212 674 1631

See GreenMap.org/universities

@GreenMap